

HABITAT



Commerce



TRANSPORT



ENVIRONNEMENT



PATRIMOINE



PLUI

PLAN LOCAL D'URBANISME INTERCOMMUNAL

Terres de Perche

1.7 Annexes – Atlas des STECAL


COMMUNAUTÉ DE COMMUNES

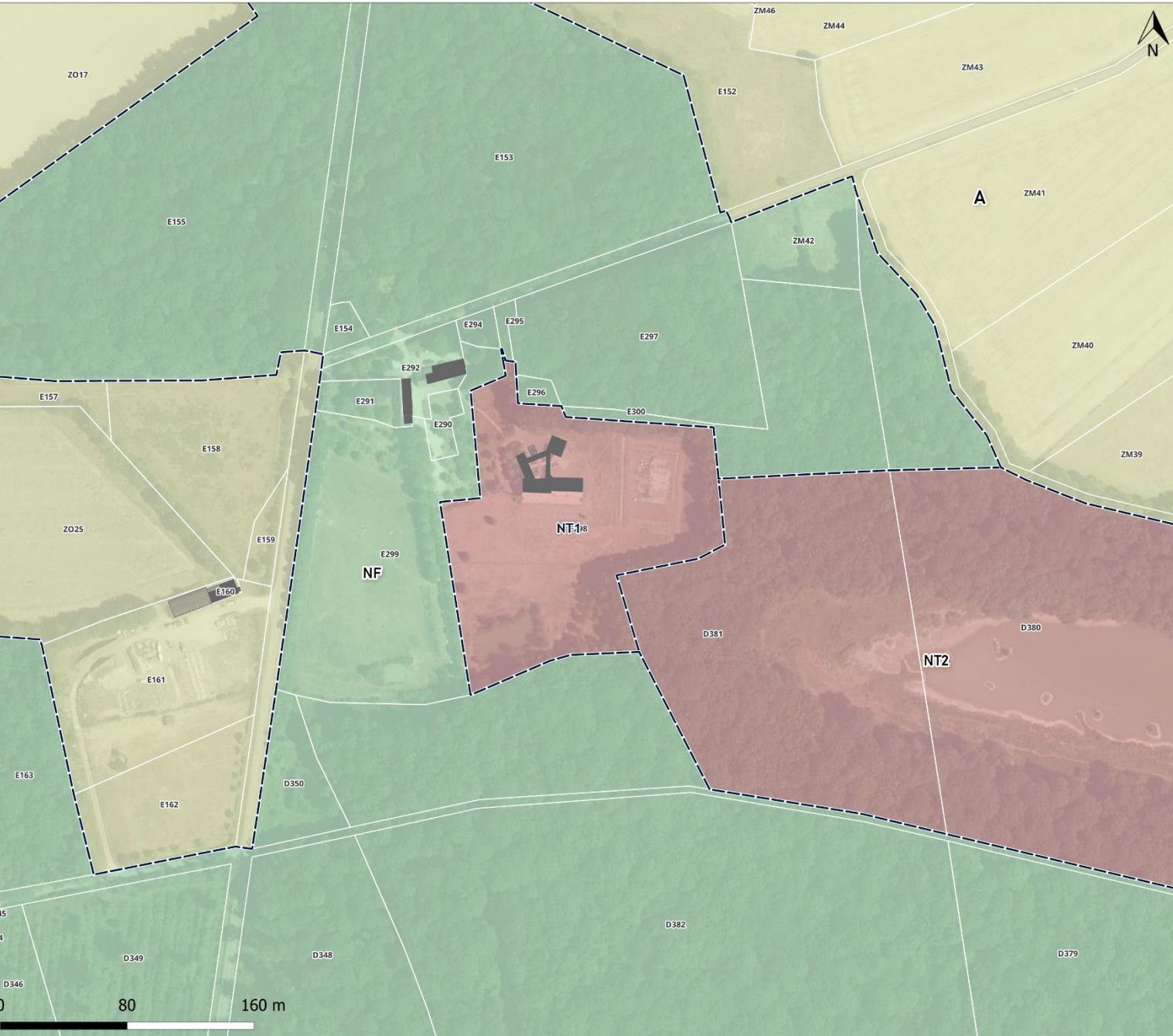
Terres de
Perche

Juin 2023



STECAL :

 AZ : 0.38 ha



STECAL :
[Dashed box icon] NT1 : 2.25 ha

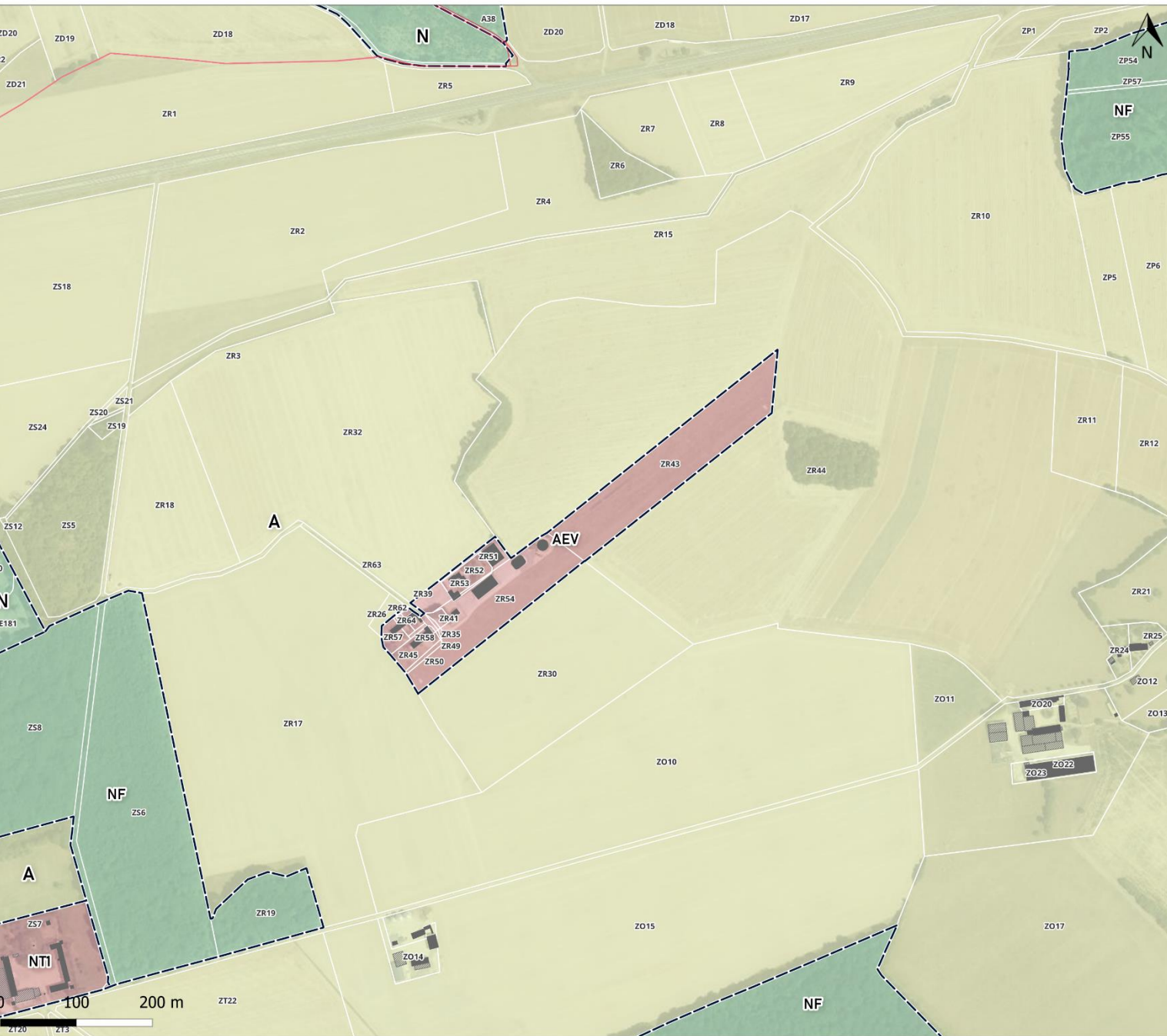




STECAL :

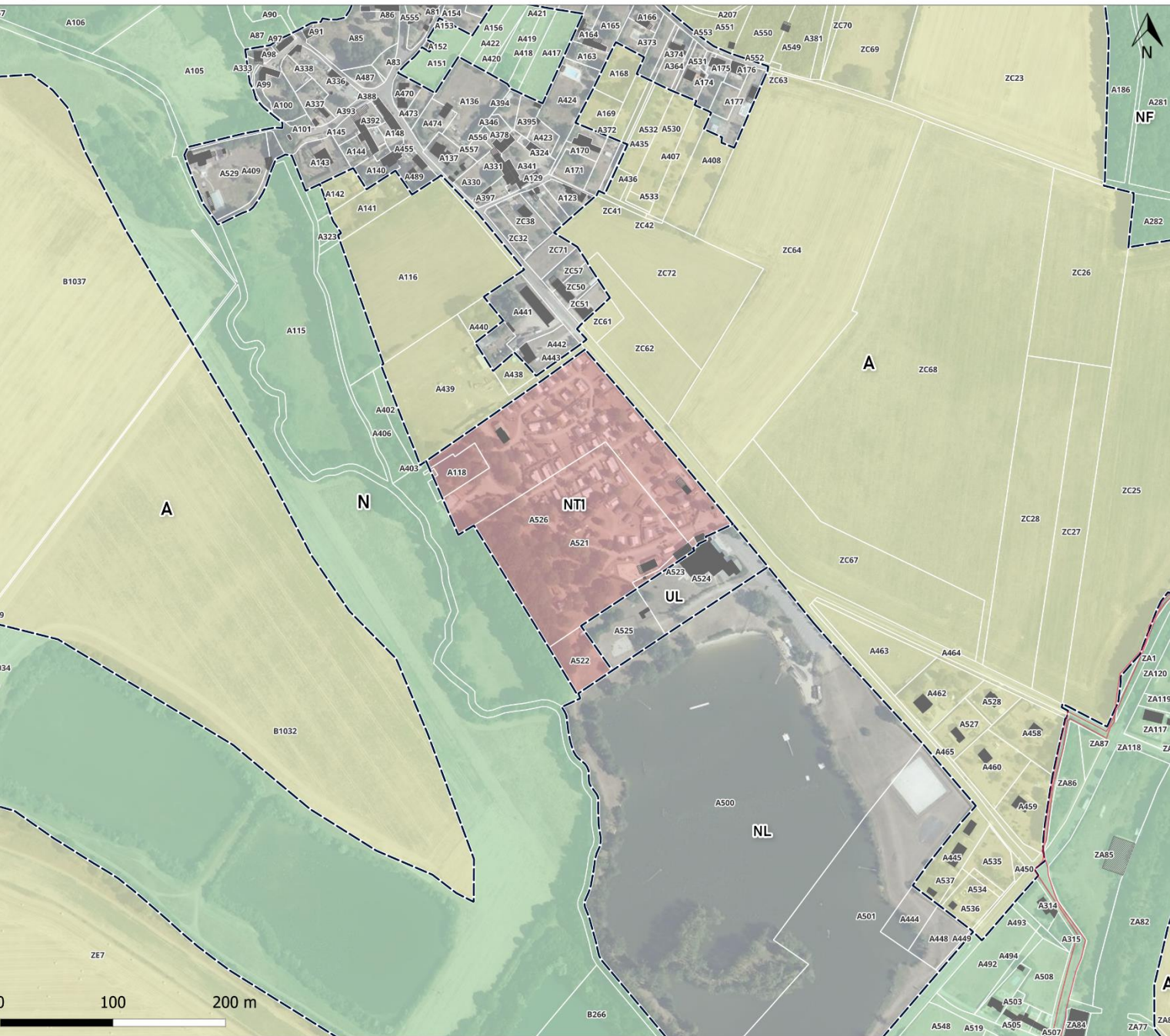
 NT1 : 2.11 ha





STECAL :
[dashed box] AEV : 4.52 ha

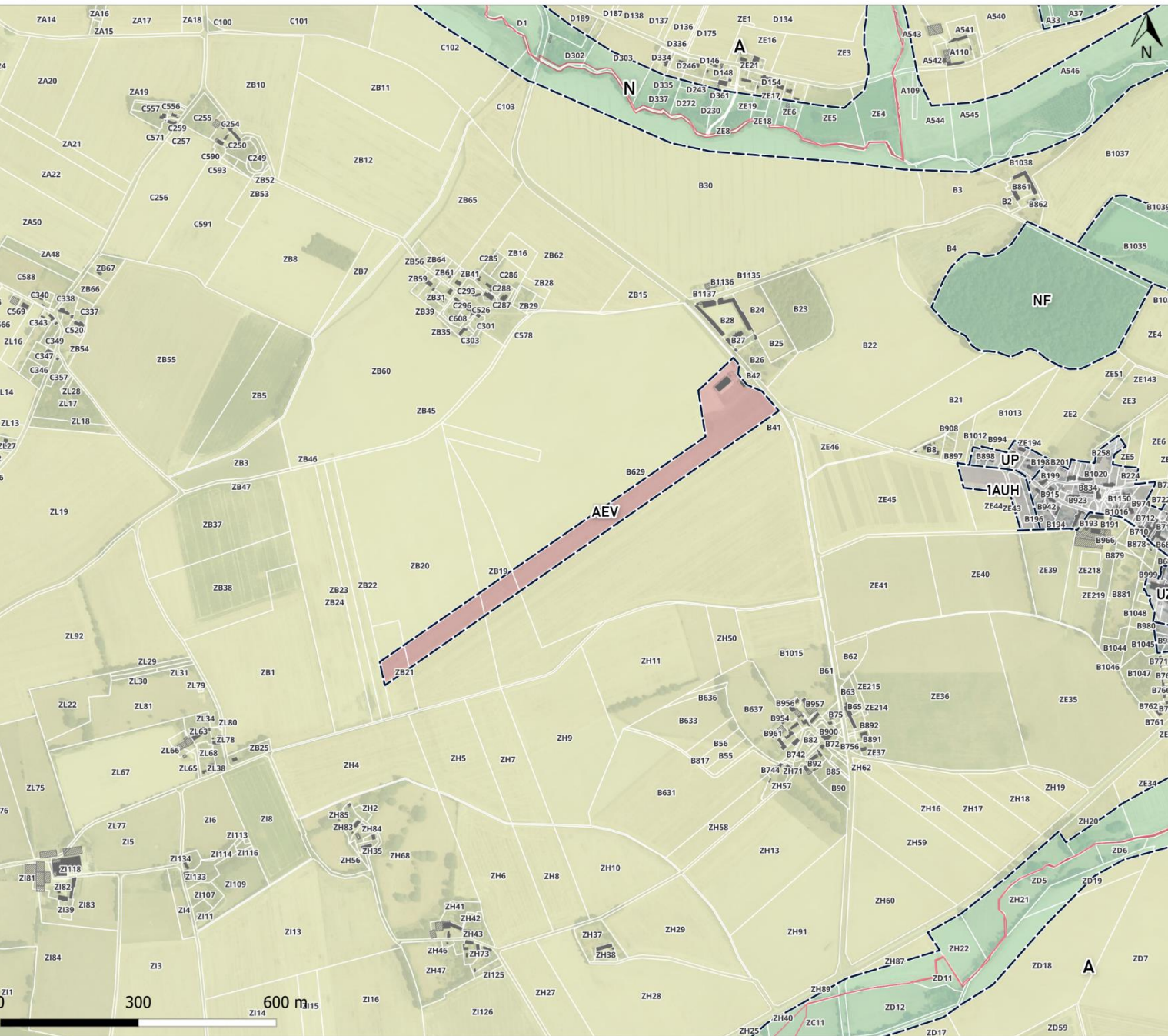




STECAL :

 NTI : 3.89 ha






STECAL :
AEV : 5.98 ha



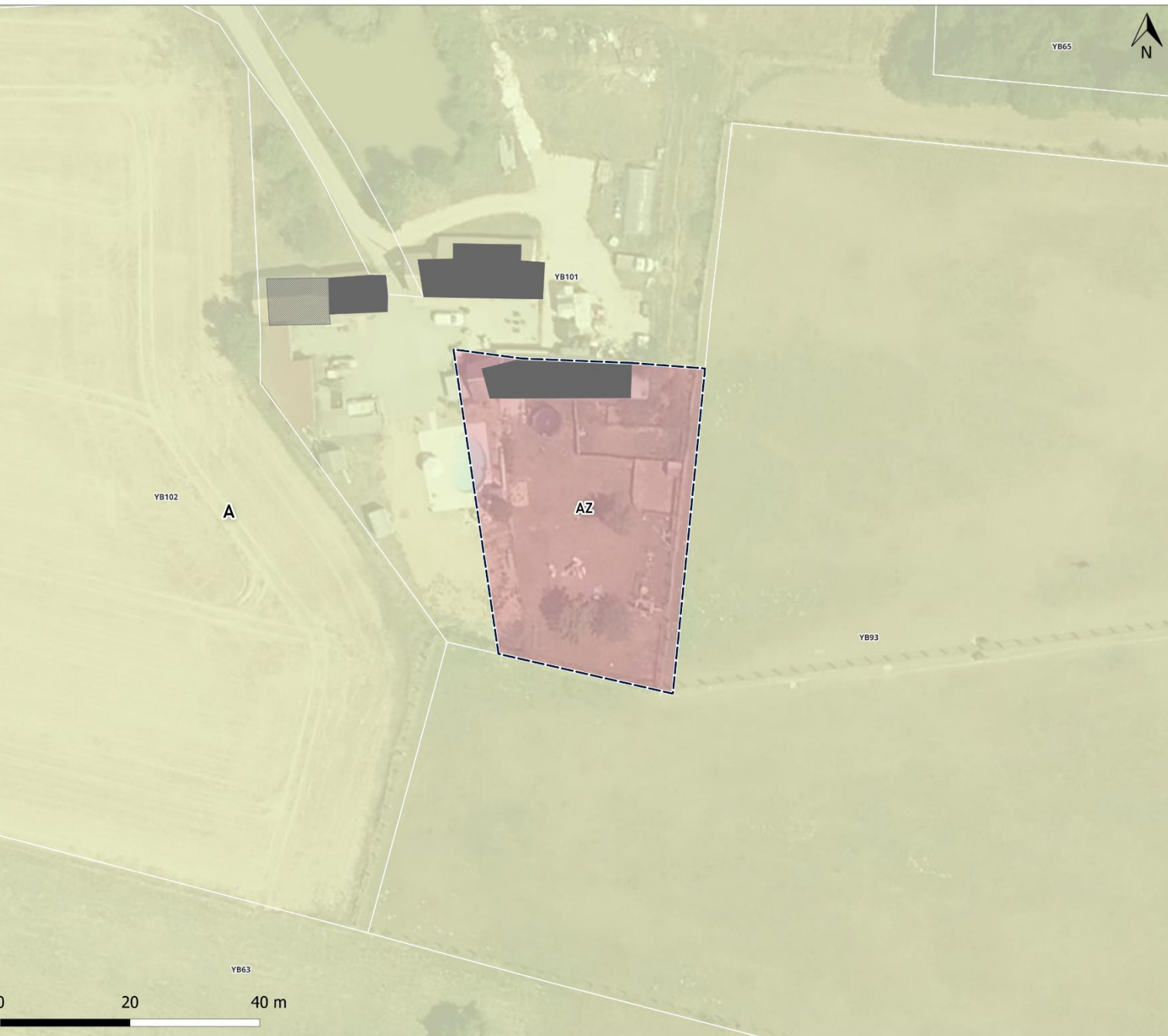


STECAL :

 AZ : 0.42 ha

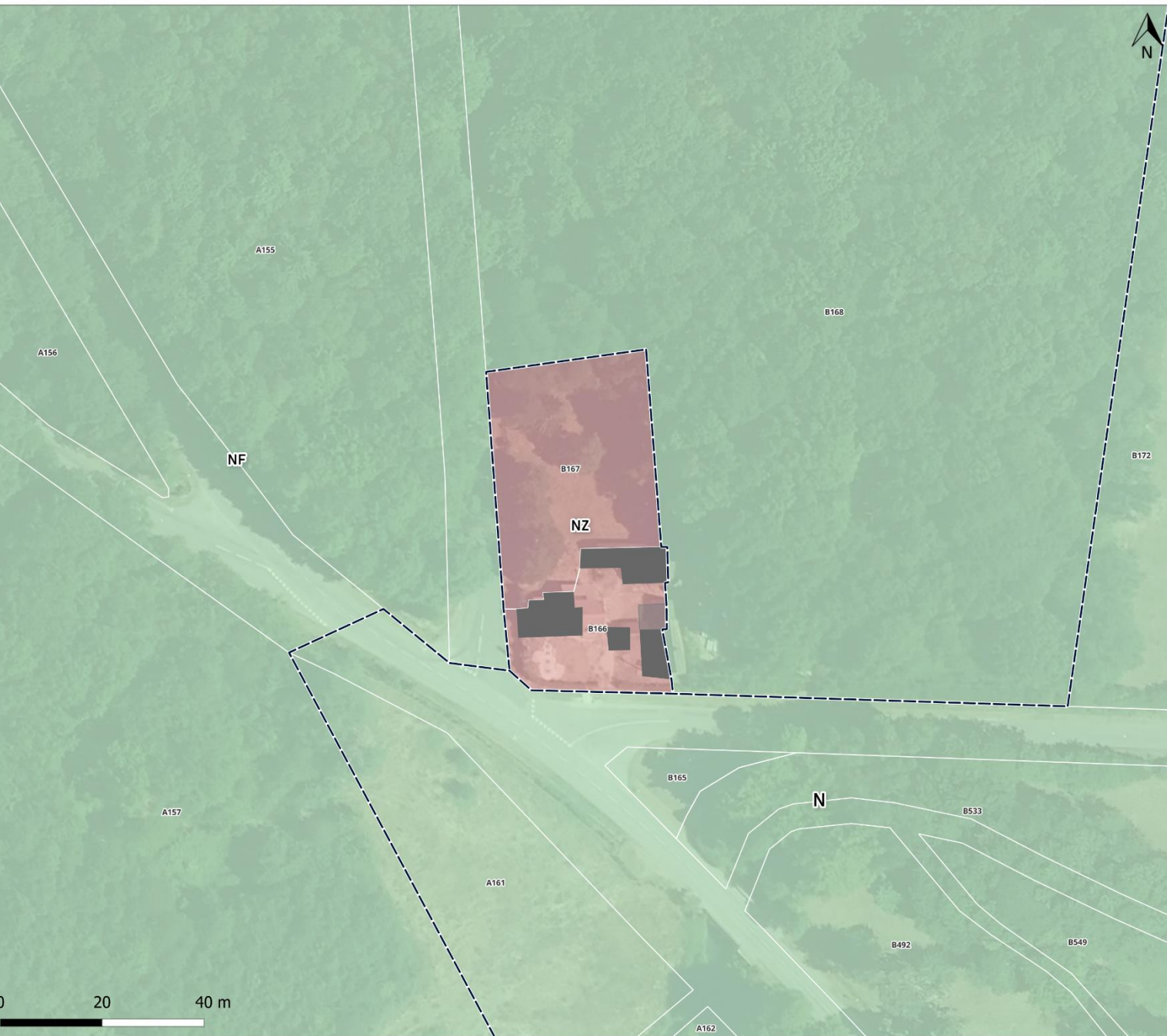
20 40 m





STECAL :

 AZ : 0.16 ha



STECAL :

 NZ : 0.21 ha





STECAL :

 NT2 : 0.94 ha





STECAL :

 NT1 : 0.44 ha





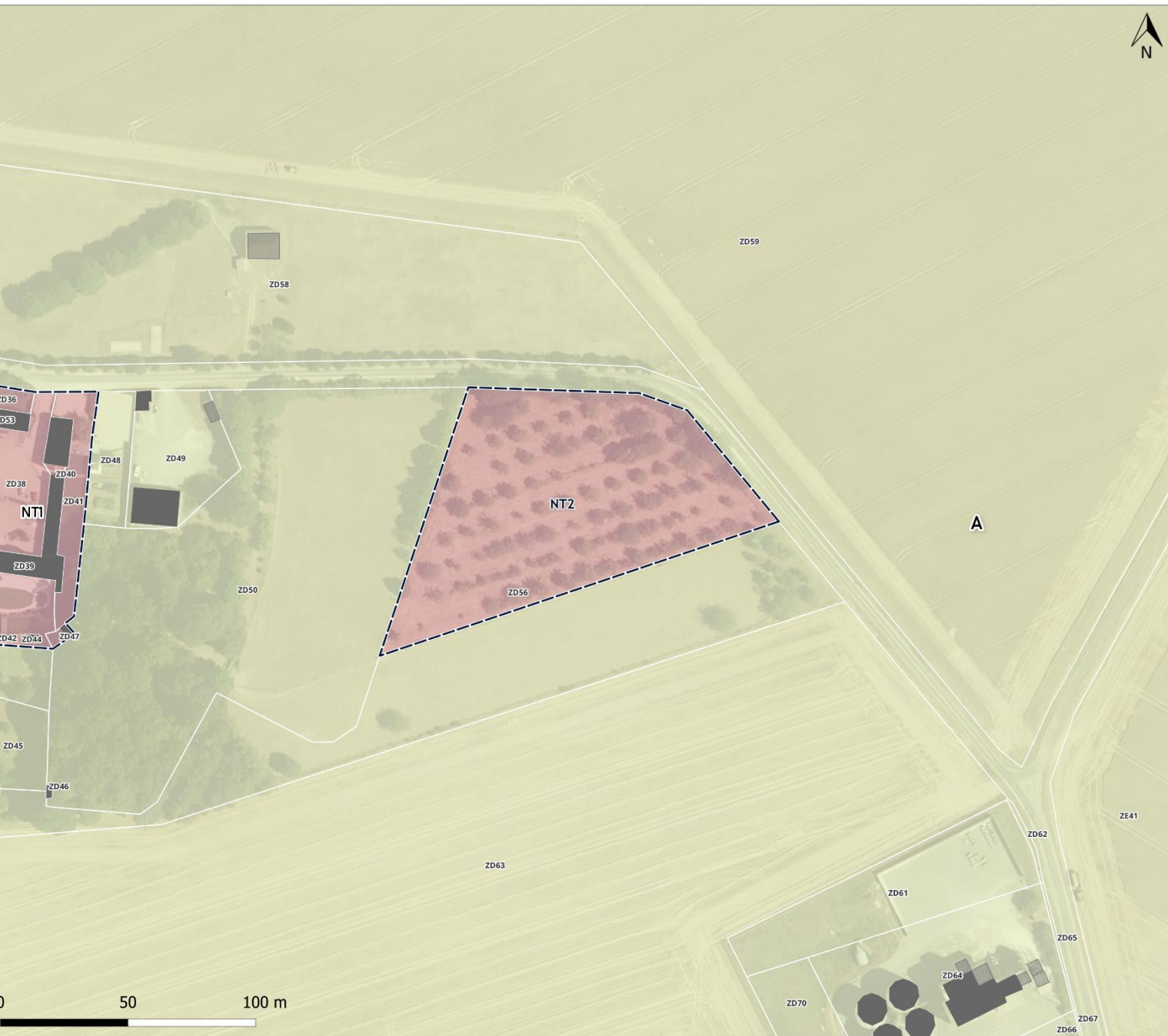
STECAL :
NT2 : 5.58 ha






STECAL :
AZ : 0.17 ha





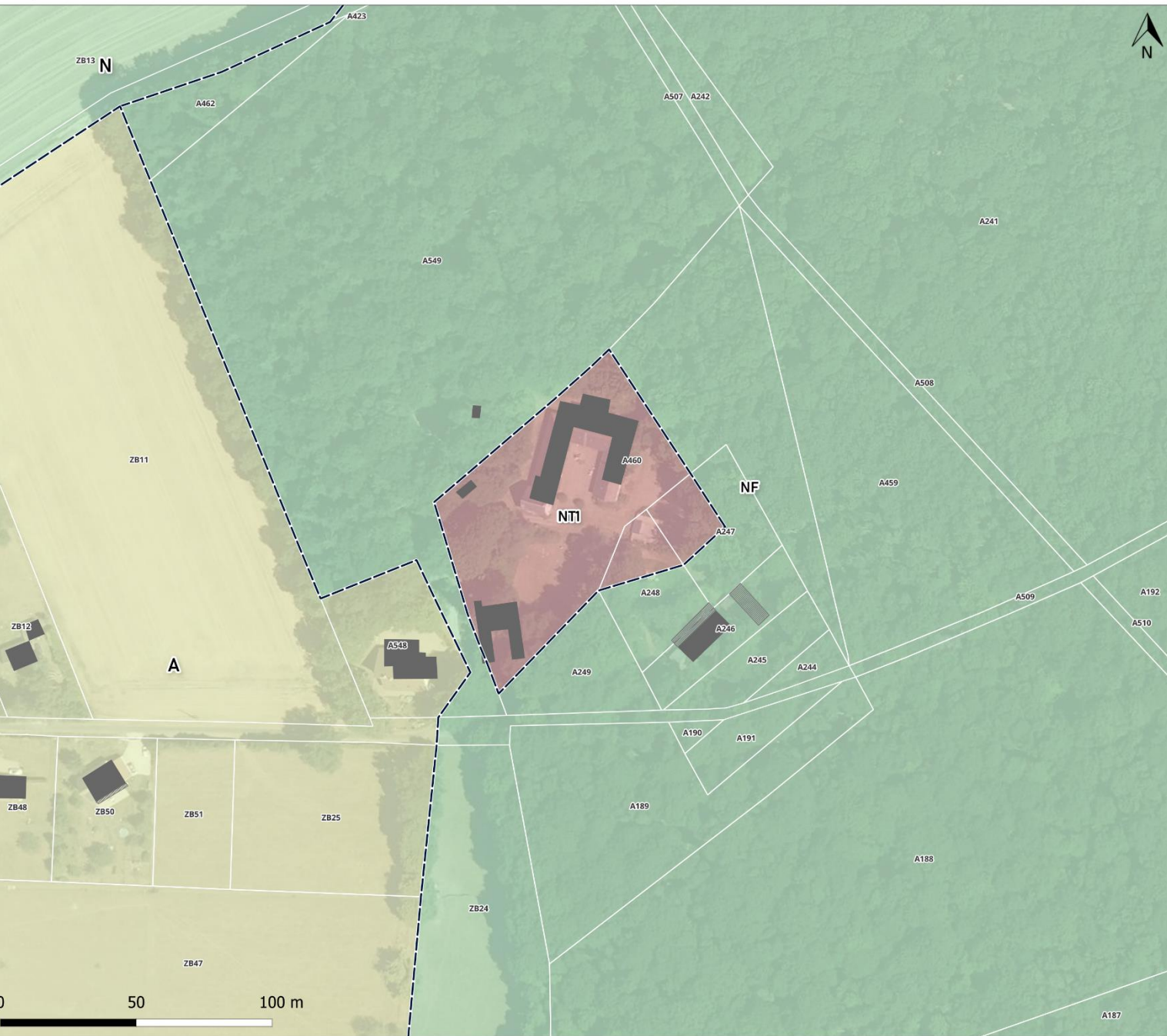
STECAL :
 NT2 : 0.92 ha





STECAL :

 NT1 : 1.01 ha




STECAL :

 NT1 : 0.67 ha





STECAL :

 NT1 : 0.39 ha




STECAL :
[] NT2 : 0.84 ha





STECAL :

 NT1 : 0.38 ha






STECAL :
AZ : 0.31 ha





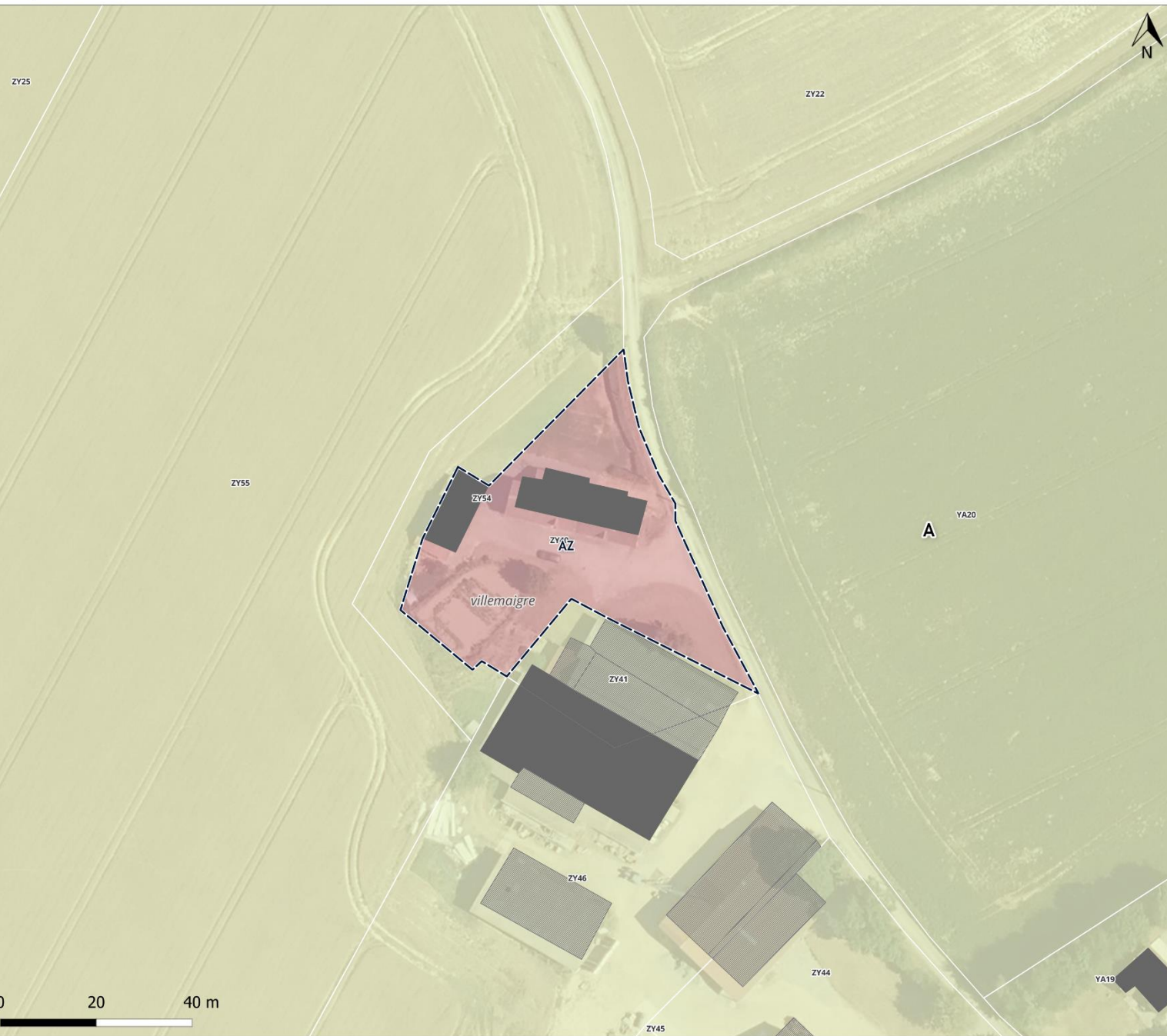
STECAL :

 AZ : 0.09 ha

0 10 20 m

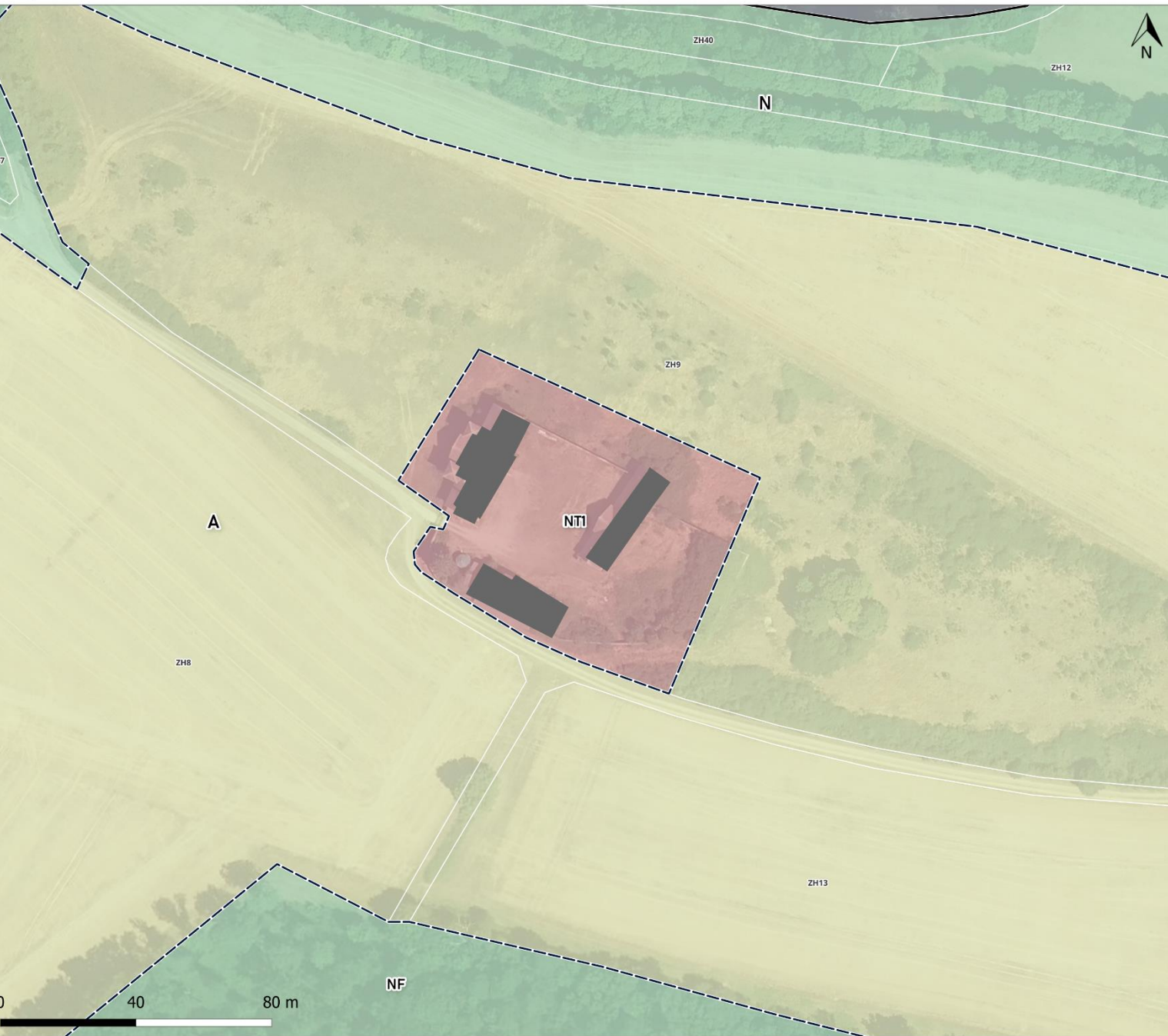


STECAL :
[dashed box] NT2 : 1 ha



STECAL :
AZ : 0.24 ha





STECAL :

 NT1 : 0.64 ha



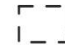
STECAL :

 NT1 : 1.06 ha





STECAL :

 Nt1 : 1.38 ha





STECAL :

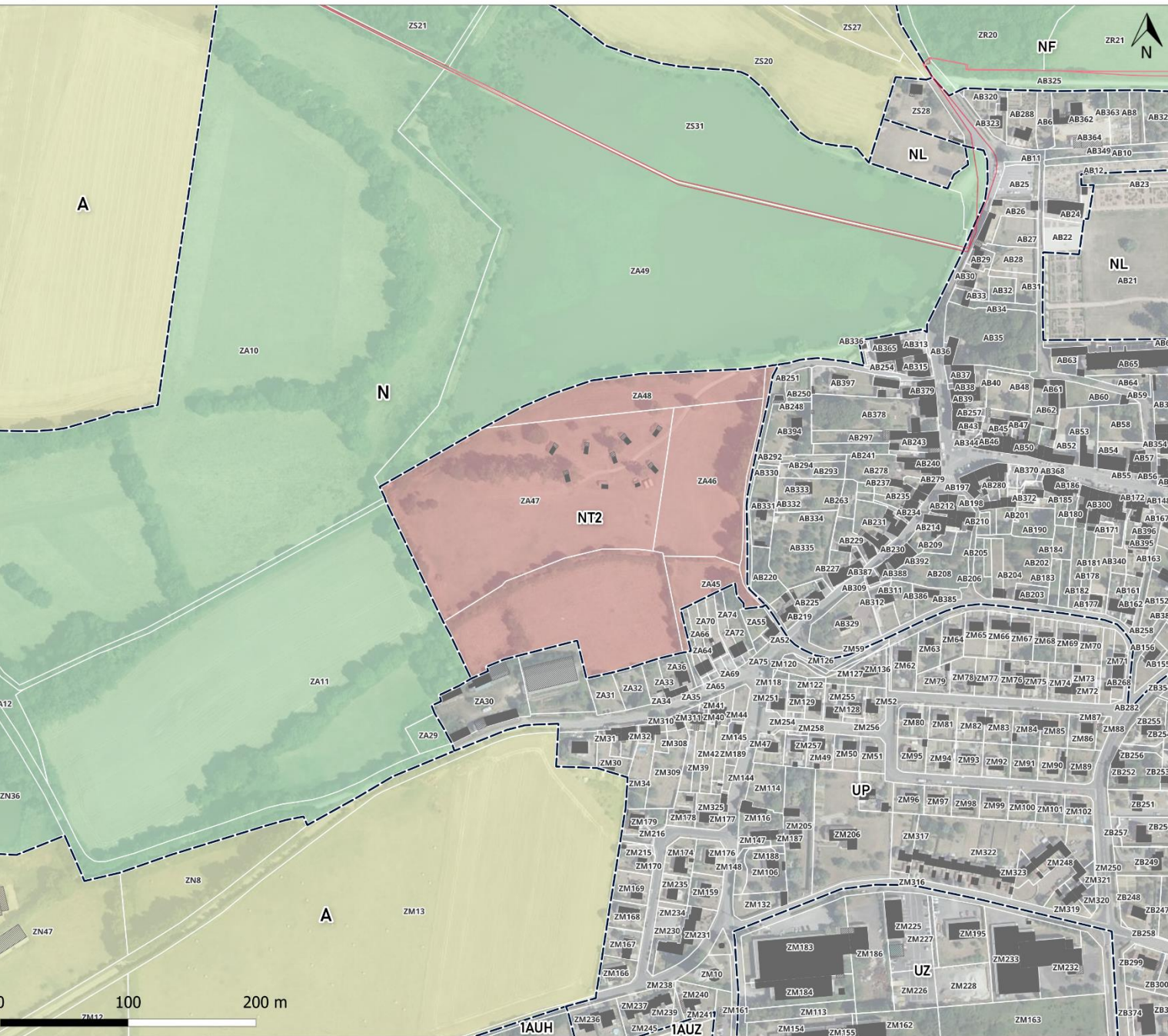
 Az : 0.19 ha





STECAL :
[dashed box] NZ : 0.18 ha





STECAL :

 NT2 : 5.19 ha

